

BORDER OAK

PLOT TWO
GLADESTRY

A truly unique opportunity to purchase a generous plot in a stunning rural village with spectacular views.

DETAILS

PLOT SIZE: 0.08Ha

HOUSE SIZE: 232M2

PLOT COST: £210,000

HOUSE BUILD COST: £526.912*

Full planning permission has been granted for a 3 bedroomed house. The ground floor includes a spacious kitchen/diner, large utility and walk in pantry with a separate sitting room and office. Upstairs has a master en-suite with dressing room, second bedroom with ensuite, 3rd bedroom and a family bathroom.

The house will have an internal oak frame and SIPs faced with handmade brick and weatherboard with a part stone chimney, painted external joinery and a slate roof.

The site also has planning permission for a 2 bay carport.



similar design

*Build Cost excludes items such as: kitchen, bathrooms, electrics, plumbing, heating, decoration, flooring etc. - we can provide costs for these items once the specifics are known.

PLOT TWO
ELEVATIONS

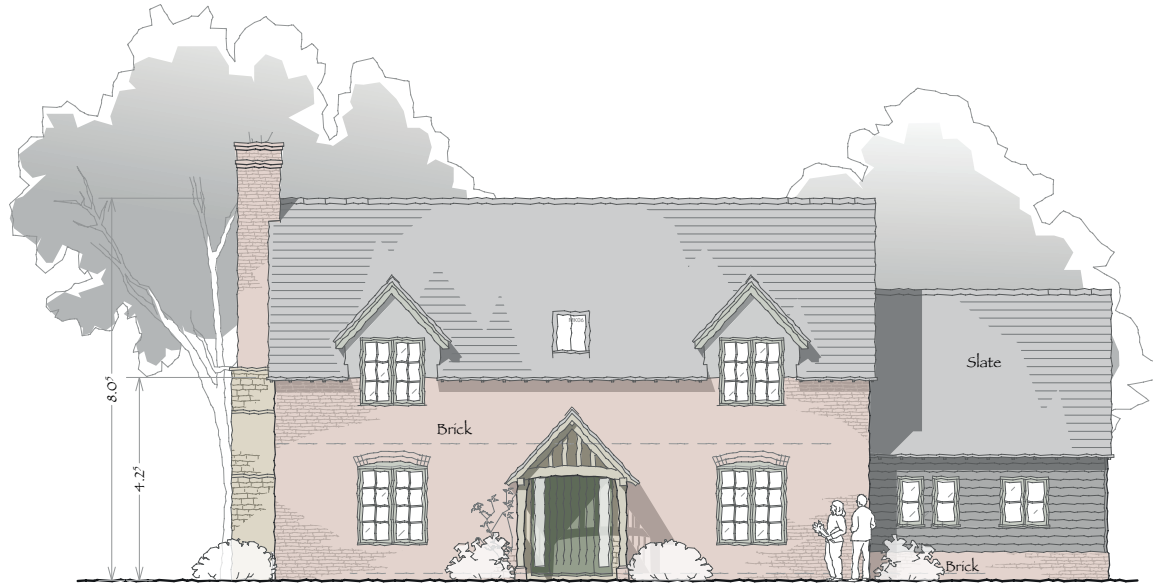


REAR

Glazed oak frame



SIDE



FRONT

1.45 x 1.65m
windows



SIDE

PROPOSED DEVELOPMENT adjacent to CHURCH BARN . GLADESTRY

PLOT 2

1:100 ON A3 . JULY 2022

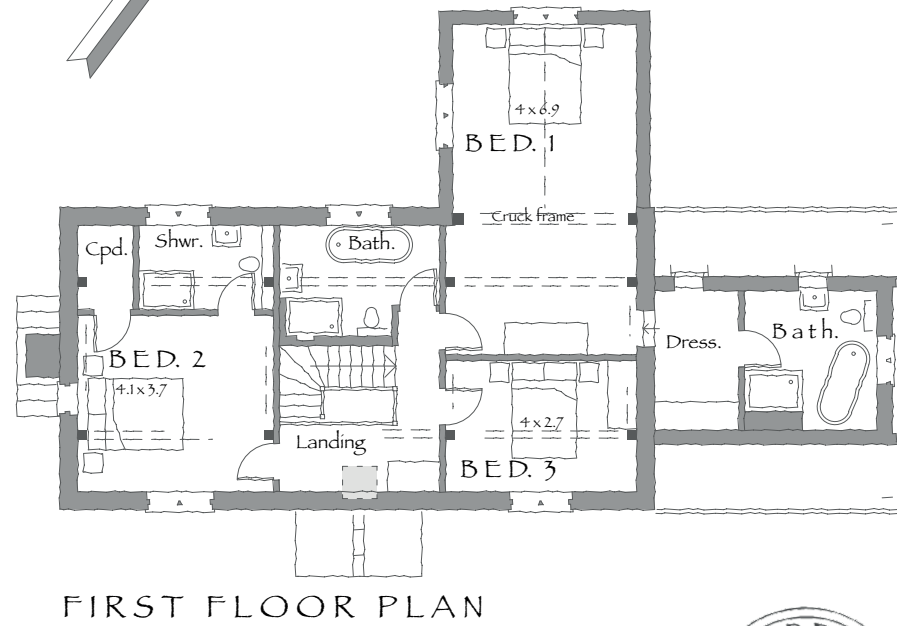
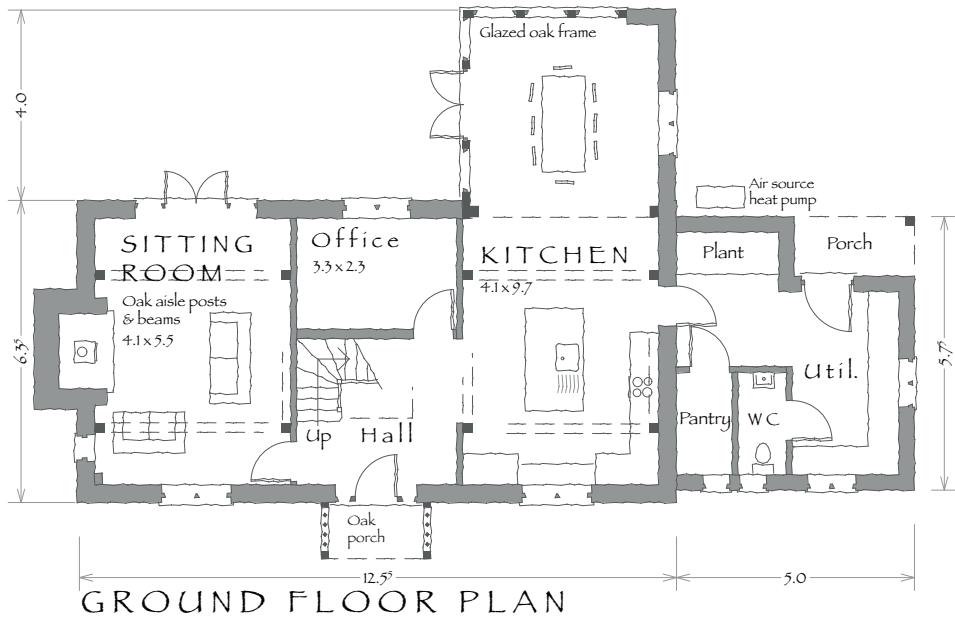
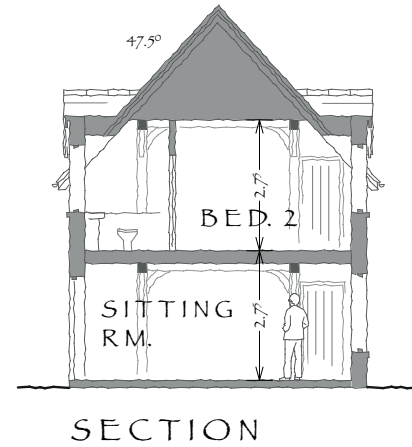


D1936.5B



©All rights reserved

PLOT TWO
FLOOR PLANS



PROPOSED DEVELOPMENT adjacent to CHURCH BARN . GLADESTRY

PLOT 2

1:100 ON A3 . JULY 2022

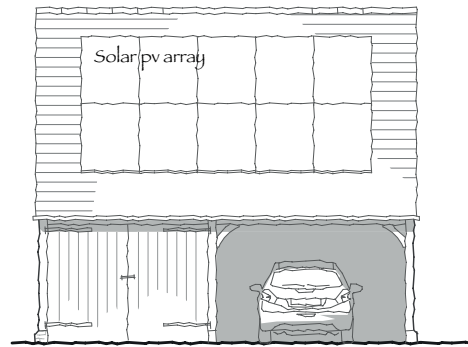


D1936.4C

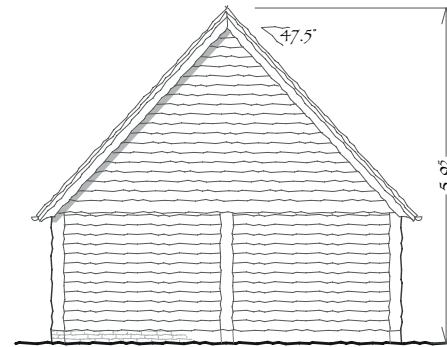


©All rights reserved

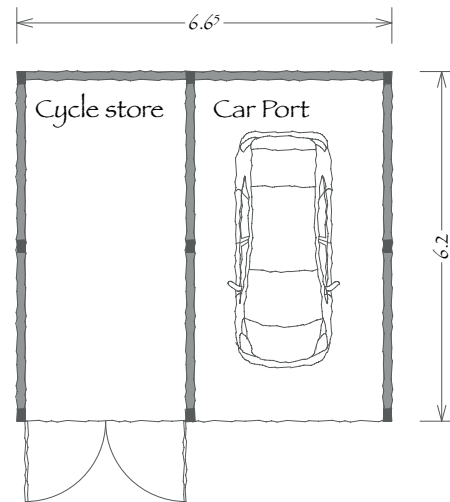
PLOT TWO
GARAGE PLANS
GARAGE: £54,000



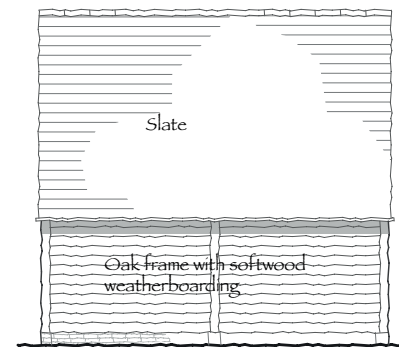
FRONT



SIDES



FLOOR PLAN



REAR

PLOT TWO
INSPIRATION IMAGES



similar designs

