

BORDER OAK

PLOT FOUR
GLADESTRY

A truly unique opportunity to purchase a generous plot in a stunning rural village with spectacular views.

DETAILS

PLOT SIZE: 0.15H

HOUSE SIZE: 224M2

PLOT COST: £220,000

HOUSE BUILD COST: £508,822*

Full planning permission has been granted for a 3 bedroom house based on our St Michael's cottage design. The ground floor includes a spacious kitchen/diner with a large utility and walk in pantry. There is a separate sitting room and office and shower room.

Upstairs has a master with en-suite and dressing room. Bedroom 2 also has an en-suite and a 3rd double bedroom.

The house will have an internal oak frame and SIPs faced with a handmade brick plinth/weatherboarding and natural render with painted external joinery and a slate roof.

The site also has planning permission for a 3 bay single storey, weatherboard and slate garage. 2 open bays and 1 enclosed.



similar design

*Build Cost excludes items such as: kitchen, bathrooms, electrics, plumbing, heating, decoration, flooring etc. - we can provide costs for these items once the specifics are known.

PLOT FOUR
ELEVATIONS



REAR



SIDE



FRONT



SIDE

PROPOSED DEVELOPMENT adjacent to CHURCH BARN . GLADESTRY

PLOT 4

1:100 ON A3 . JULY 2022



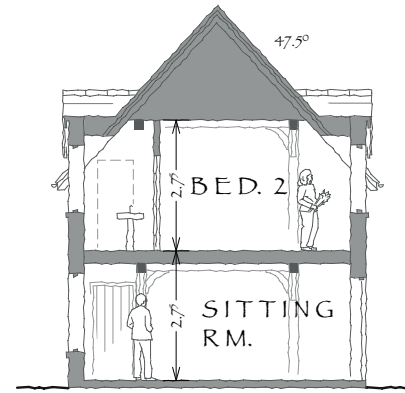
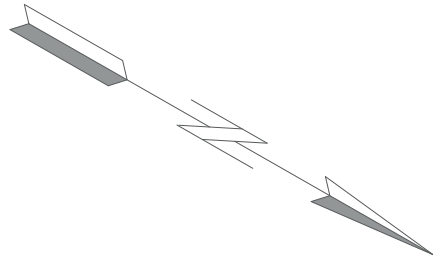
D1936.9c



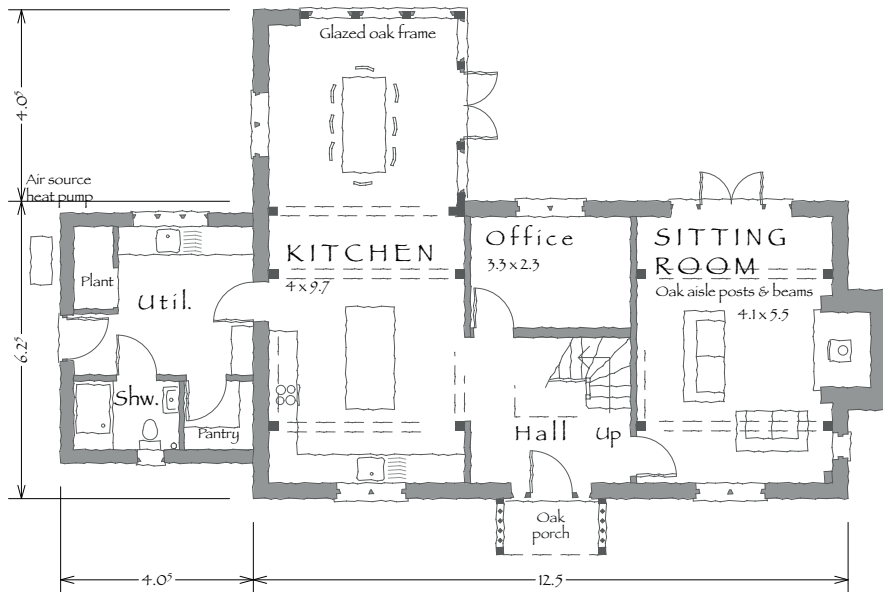
©All rights reserved

Revision C: 20.12.22 Bed 2 amended

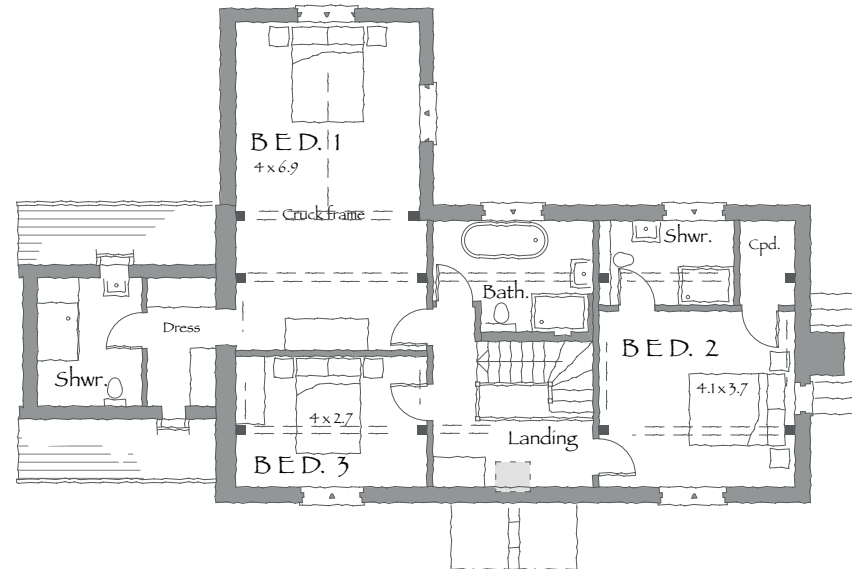
PLOT FOUR
FLOOR PLANS



SECTION



GROUND FLOOR PLAN



FIRST FLOOR PLAN

PROPOSED DEVELOPMENT adjacent to CHURCH BARN . GLADESTRY

PLOT 4

1:100 ON A3 . JULY 2022

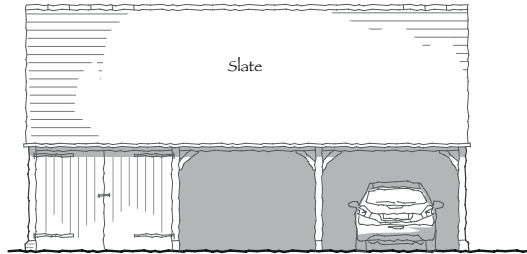


D1936.8c

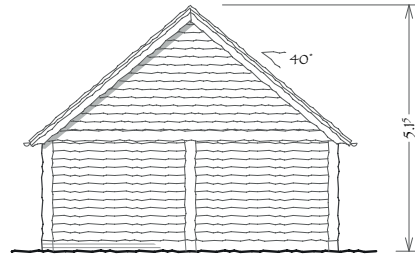


Revision C: 20.12.22 Bed 2 amended

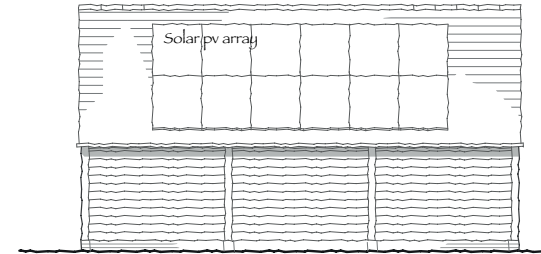
PLOT FOUR
GARAGE PLANS
BUILD COST: £62,000



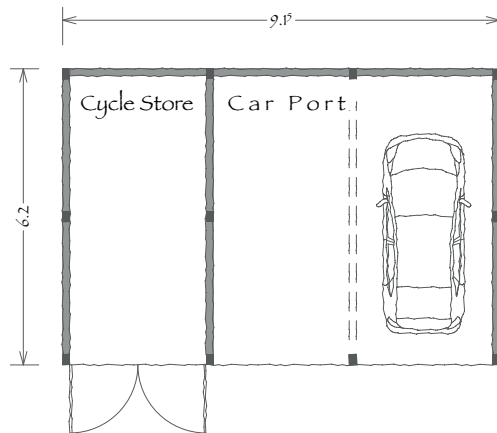
FRONT



SIDES



REAR

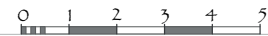


FLOOR PLAN

PROPOSED DEVELOPMENT adjacent to CHURCH BARN . GLADESTRY

PLOTS 4 & 5 GARAGES

1:100 ON A3 . DEC. 2022



D1936.14A



©All rights reserved

Revision A: 20.12.22 Roofs shallower

PLOT FOUR
INSPIRATION IMAGES

Further inspiration can be found on our Pearmain Cottage or Sussex Coastal Cottage case studies on our website. (www.borderoak.com/casestudies)

